

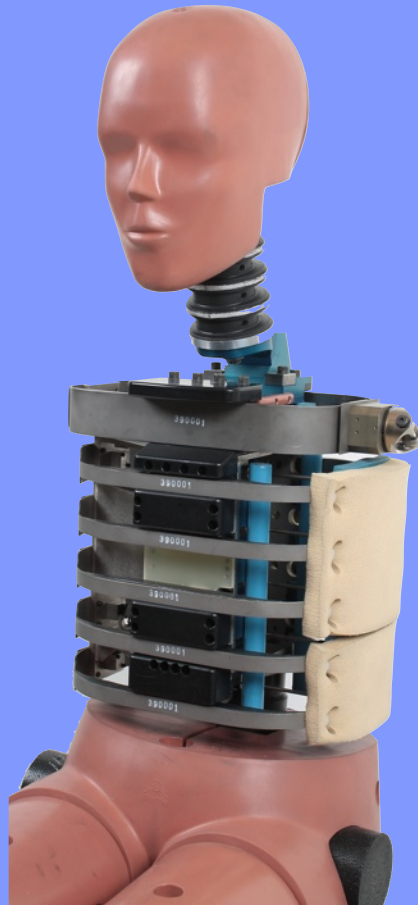
SID-IIs Training

About SID-IIs

The Side Impact Dummy - II small (SID-IIs) was originally design to fill a void in the crash test dummy family for a side impact dummy meeting the anthropometric characteristics of the 5th percentile female population.

The SID-IIs was inserted in the U.S. automotive testing regulations in 2006 as CFR 49, Part 572, Subpart 'V' (Build Level 'D').

SID-IIs allows the attachment of up to 118 data channels for testing a wide variety of human conditions and test situations.



SID-IIs BLD
Dummy

Location

Denton Technical Center
1965 Larchwood Drive
Troy, Michigan 48083 USA
Tel: 248.852.5100
www.DentonTech.Net

Training Agenda

The two-day training seminar for the SID-IIs dummy consists of:

Day 1	Introduction to SID-IIs
	SID-IIs Instrumentation
	Disassembly / Assembly
Day 2	SID-IIs BLD Certification
	SID-IIs Certification Troubleshooting
	Review, Questions & Answers

Introduction	History, basic components, uses.
Instrumentation	Discussion and demonstration of sensors and devices that can be installed in the ATD.
Disassembly / Assembly	Demonstration and practical exercises in the proper disassembly and assembly of the ATD.
Certification	Demonstration and practical exercises in the proper adjustment and certification of the ATD.
Certification Troubleshooting	Demonstration and practical exercises concerning how to overcoming certification problems.

